



GMT MONTHLY MEMBERSHIP PROGRESS REPORT

Results as of: 5/31/2020

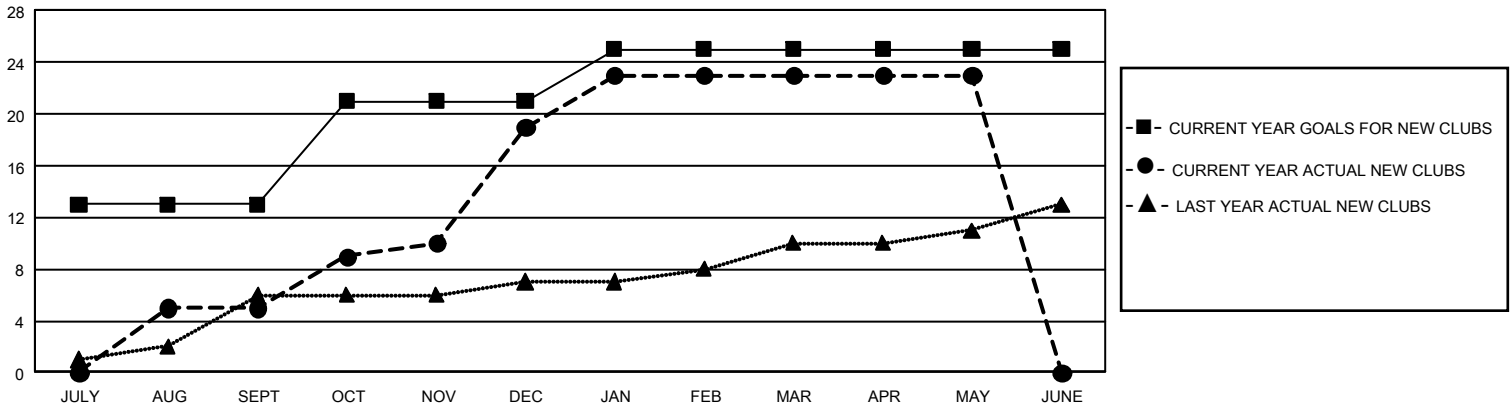
GMT Constitutional Area 5 - K, Group L

GMT: OPEN

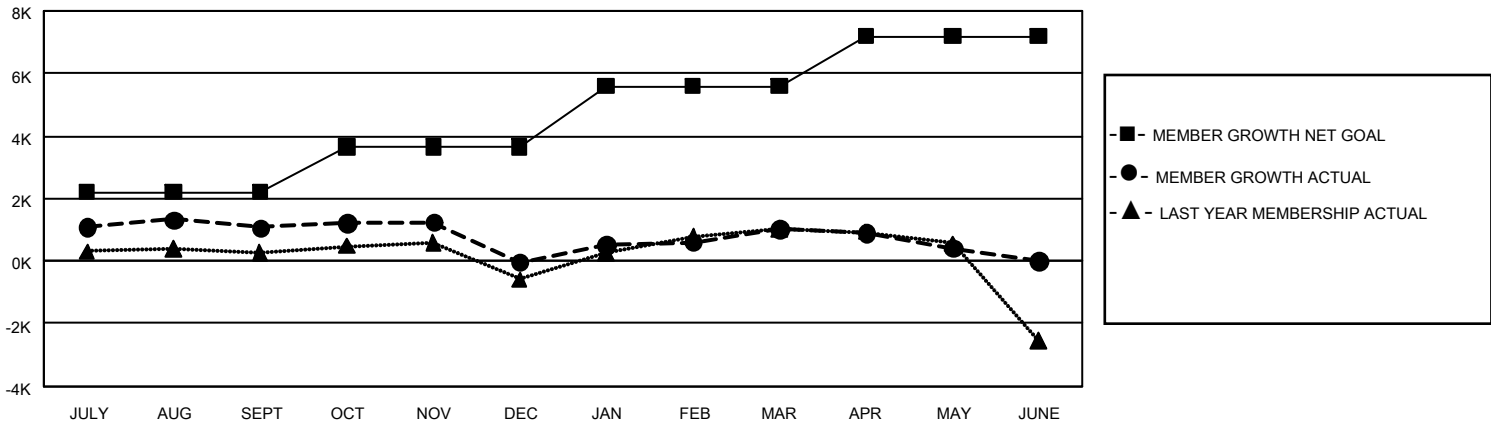
REPORT DOES NOT INCLUDE CLUBS IN UNDISTRICTED AREAS.

Clubs				Members			
RESULTS FOR 2019-2020				RESULTS FOR 2019-2020			
QUARTER	NEW CLUB GOAL	NEW CLUBS	DROPPED CLUBS	QUARTER	MEMBER GROWTH NET GOAL	MEMBER GROWTH ACTUAL	DROPPED MEMBERS ACTUAL (including transfers)
JULY/AUG/SEPT	39	5	3	JULY/AUG/SEPT	6,630	2,781	1,620
OCT/NOV/DEC	24	14	1	OCT/NOV/DEC	4,350	2,008	3,073
JAN/FEB/MAR	12	4	25	JAN/FEB/MAR	5,820	1,863	667
APR/MAY/JUNE	0	0	0	APR/MAY/JUNE	4,770	368	912

GOALS AND ACTUAL NEW CLUBS CUMULATIVE



GOALS AND ACTUAL MEMBERS CUMULATIVE



DROPPED CLUBS: 29	944 CLUBS OF 1,075 ADDED 1 OR MORE NEW MEMBERS	<u>GENDER DISTRIBUTION</u> MALE 35,409 (71.59%) FEMALE 14,051 (28.41%)
<u>DROPPED MEMBERS</u> DECEASED 120 CLUB CANCELLED 55 OTHER 6,097 <hr/> TOTAL 6,272	CLICK HERE FOR CUMULATIVE MEMBERSHIP DATA	TOTAL FAMILY UNIT MEMBERS 5,466 FAMILY MEMBERS PAYING HALF DUES 3,233